

Because of you we've

Created Connections in our Community

Parents in Toto 2021 *Annual Report*

Parents in Toto
143. S. Main St.
Zelienople, PA
16063

hope@parentsintoto.org
724-473-0990
www.parentsintoto.org

In 2008, when Mary Limbacher founded and opened Parents in Toto in the heart of Zelienople's Main street, she wanted it to remain a unique and uplifting space for families and individuals. For 14 years, Toto has served families impacted by autism. We have hosted parent support groups, craft days, special speakers and group of all ages. The Toto way infuses everything we do at Toto and impacts all who enter our doors. Toto will continue to grow and widen our community support. As our programming, team and support has grown, we look back on 2021 with appreciation and forward into 2022 with hope.

"I did not pattern
Parents in Toto to replicate
anything that is being done. I
want us to be the opposite.
My satisfaction comes from
providing families and
individuals with uncharted
activities to fill the void"

Mary Limbacher, 2012
Founder, Executive Director



14
years of
service to
families



in toto [in 'tōdō]
ADVERB

as a whole

"Everyone is welcome to be a part of our community in toto."

in total

"We support our participants in toto."

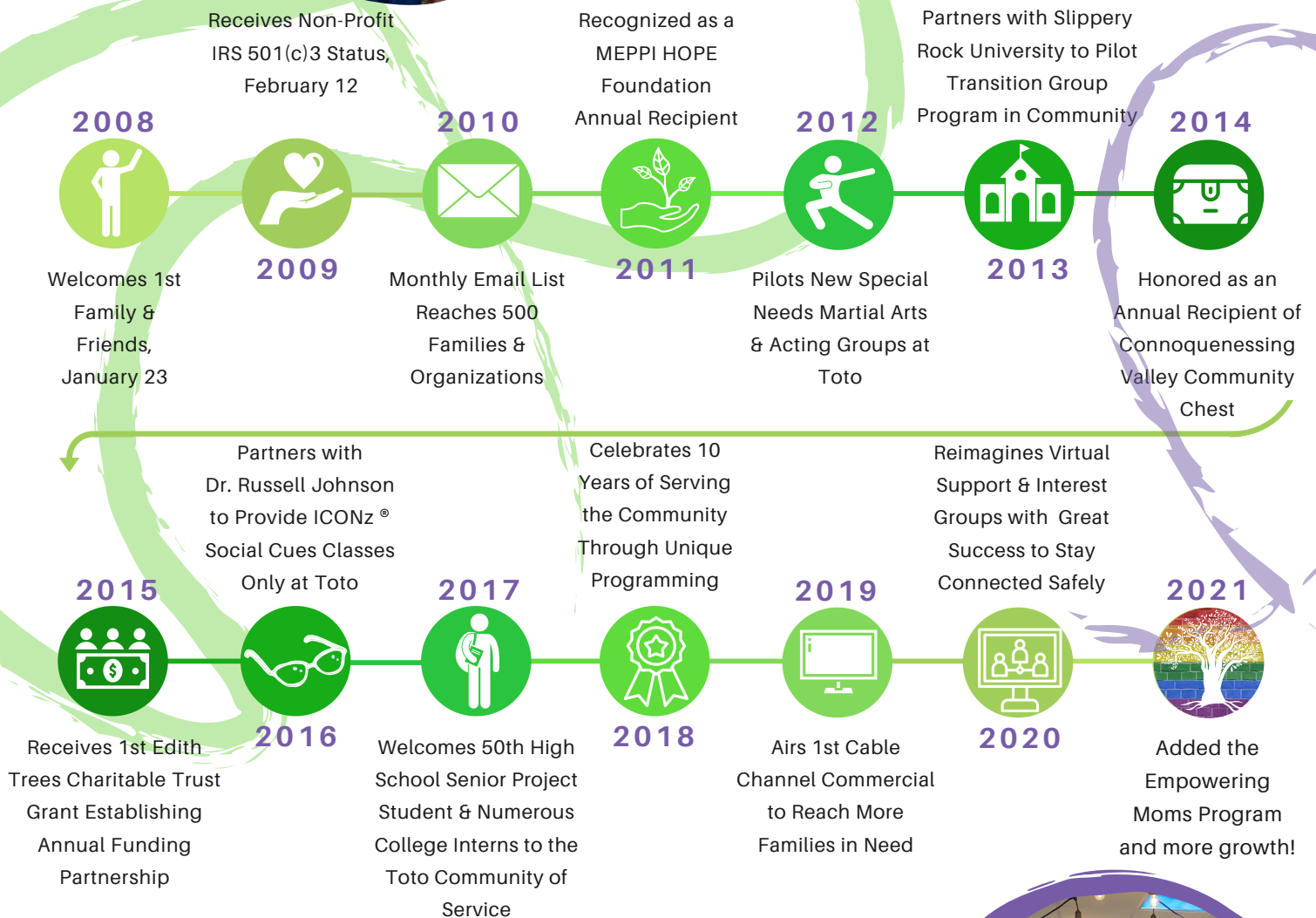
synonyms: completely, totally, entirely, absolutely, wholly, fully, thoroughly

Milestones of Growth

Looking back on the years



Our Toto impact is due to the dedication and commitment of our staff, board of directors, volunteers and financial supporters. In 2021, Toto supported the community at our center, online and in dynamic and creative ways. It is because of the positive impact we see that we move forward in Toto.



In 2021, Toto partnered with multiple civic organizations including Zelienople Rotary Club, Connoquenessing Valley Community Chest, Cranberry Twp. Community Chest, Cranberry Twp. Rotary Club- Sunrise, Zelienople Church of Christ, Pittsburgh North Regional Chamber, & Band Together. We are also grateful to these businesses for their support: Jaclyn Trozzo Photography, Three Rivers Music Therapy, Mitsubishi Electric Power Products, Walmart, New Castle - Harley Davidson & JJ Kennedy.



Support and Social Connections

Programming across the spectrum

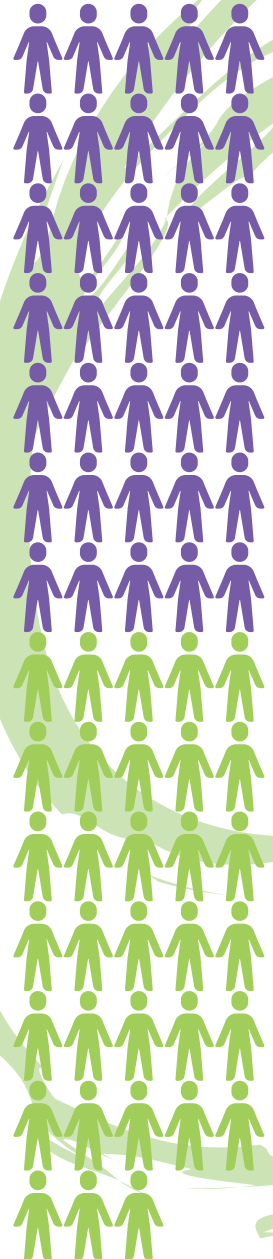
Our Inclusive Autism Support Program provides 14-15 online and in person groups a week. All of our programming is inclusive, non-clinical format and does not require a diagnosis, prior approval, insurance or commitment.

The ongoing pandemic is dynamic. We found a lot of joy in sending care packages to 68 individuals throughout the year. This added aspect of our program helps to maintain connections near and far.



Group Participation Grew:

In 2021, we made 33 new connections in our online and in person groups.



Meet RALPH

Coming to Toto has a flexible schedule these days. If Toto is a space to find support, connection and opportunity, and participants can visit as often and as long they can. Some of our Toto participants have been at Toto longer than some of our staff!

Ralph has been participating at Toto since 2009. During the pandemic he showed up for our young adult group, game days and moderates and models positivity in our Minecraft groups. We now get to see him almost every day in person or online! His presence is so beneficial that he has volunteered regularly to set up and clean up the electronics and support peers.



"One of my favorite things about Toto is a feeling of belonging somewhere. At Toto groups I enjoy the socialization-meaning I actually talk to people who have the same interests as me and think more like I do."

Ralph, 2021

14

Weekly groups

There are so many ways to connect in our inclusive, non-clinical groups.

5-95

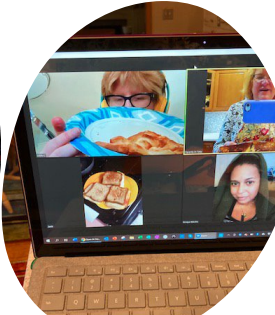
Ages

There are programs for all ages! We know that connection is needed throughout life.

0

Clinical meetings, exams or forms

Our programs are accessible and open to you - today.



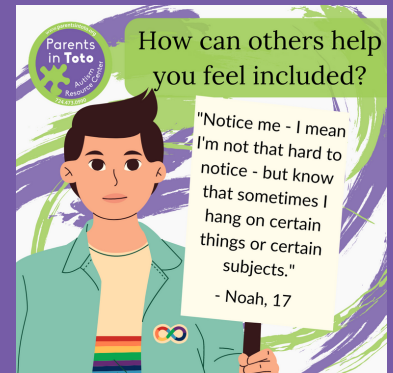
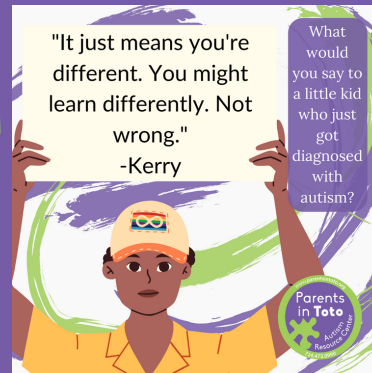
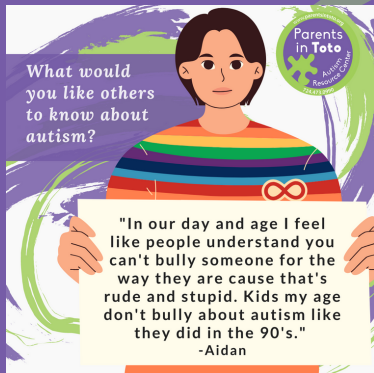
A Community of Support

Expanding the Inclusive Toto Way

empowering resources relies
engagement center supporttoto
families help turn living
assistance community pa organization changes
non-clinical young navigate space areas neighbors
social provides parents adult educational
clubs people programs donor friends
continue groups toto's skills challenges
referrals services live classes individuals zellenople
focused inclusive nonprofit place

The Toto way
is inclusive, non-clinical,
accepting, supportive and
empowering. Our programs
continue to evolve and serve a
variety of needs.

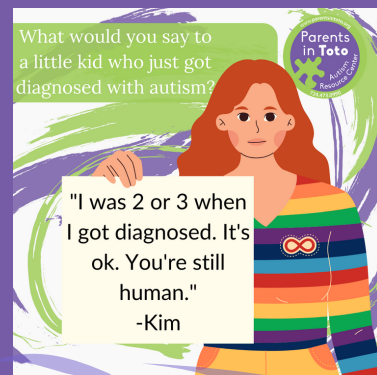
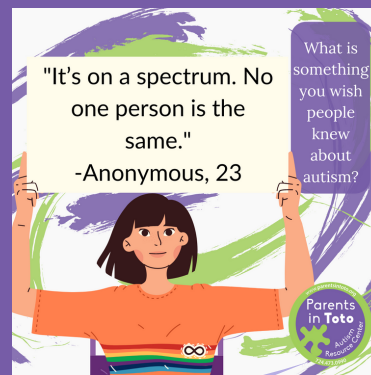
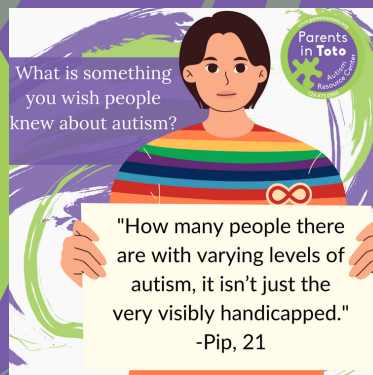
We want to continue to broaden
the way we serve the community
and will be updating our mission
and vision and name to
represent that.



One 2021 social media campaign sought to elevate autistic voices.

We are grateful for those who share their perspectives and experiences to champion neurodiversity inclusivity.

At Parents in Toto, we celebrate different viewpoints and work to be more inclusive.



New Programming in 2021 for our Inclusive Autism Program

Elementary and Secondary Minecraft Online: Individuals in 1st through 5th grade or in Middle school and up gather in our Minecraft Realm for supervised, moderated and positive online group times.

Parent Support Group: A free, virtual, social support group for parents and caregivers with children of any age on the spectrum or with a related developmental need. This group meets monthly and online.

Elementary Toto Tools: Toto Tools is a structured program designed to aid students in learning social and emotional skills through cooperative play, hands on activities and instruction on a range of coping skills and feeling identification! Our curriculum will be customized to participant needs and personalities.

A {New} Community

Introducing the Toto Way for New Moms

Empowering Moms

www.parentsintoto.org/empowering-moms



The Empowering Moms Program launched from Toto in 2021 and provides 2-4 groups a week online and in person with monthly events. Parents in Toto want to embrace whole family needs and the early years of transition embody a time of growth and challenges. Our mission is to empower women to gain confidence as new moms through a validating, diverse and accepting community setting.

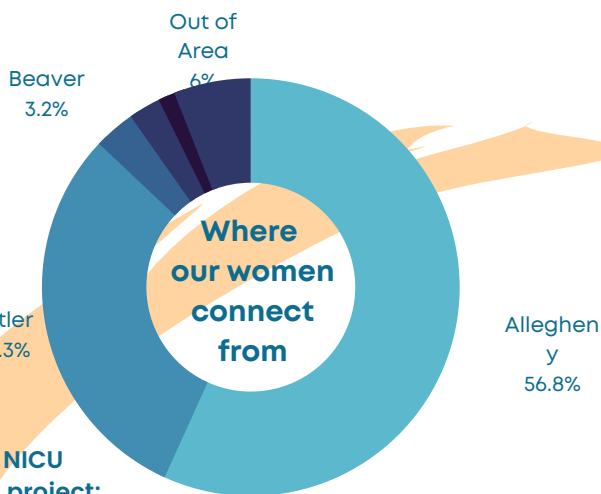
Empowering Moms has allowed me to find an army of fellow moms for insight, advice and comfort when I had nowhere to turn as a new mom.

Melissa

Empowering Moms supported and guided me through the toughest period of my life. I struggled with PPA during the 4th trimester, and the group was a huge help in my recovery. I am so thankful I found this group, and I truly appreciate the other moms I've met and shared support.

Eleonor

Mom's Speed Meet: Our first large scale social event connected 34 women at a fun and meaningful night.



Magee NICU service project: We compiled and donated 100 care bags to NICU moms.



Parenting Workshops in 2021:
Show Yourself Some Love
Toddler Tips and Tricks
No More Mr. Yuck
Raising an Anti-Racist Child
Understanding Life Insurance

Of our 390 counts of attendance to New Moms groups, 250 were in person and the rest joined through Zoom groups



Keeping the lights on... and the internet connected.

Funding Toto's Connections

The whole reason we do this -the main important thing here- is this organization that does so much good."

Ray Petelin, Toto Thon Emcee and KDKA Meteorologist

As a non-profit, funding is an ongoing need to ensure our programs remain active and present and our center remains open and thriving. We appreciate all small and large donations from individuals, civic organizations, grantors and businesses.



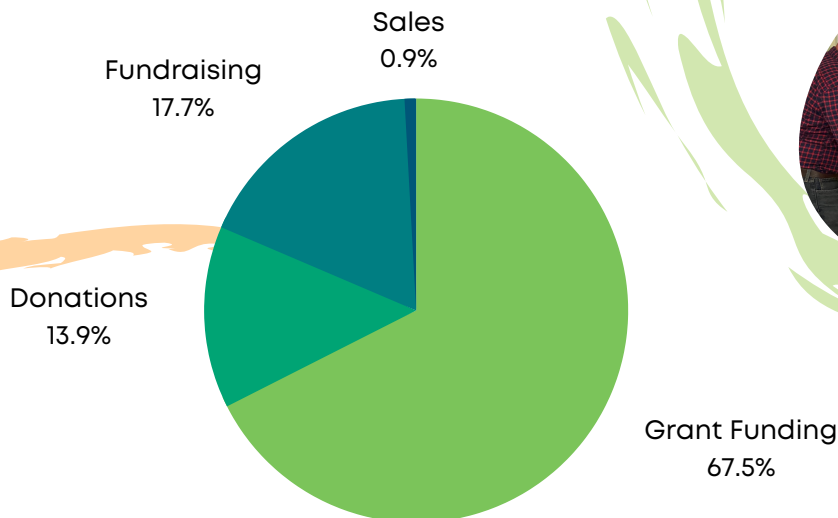
We sold 355 tickets out of 500 to our virtual cash bash. We had more participants this year than in 2020!



The Toto Thon raised \$24,792 - so close to our \$25,000 goal! We call that a huge success as our highest netting fundraiser to date!

We continue to appreciate funding from the Edith L. Trees Foundation, the Connequenessing Valley Community Chest and Cranberry Township Community Chest.

Thank you to our current recurring donors, sponsoring \$620 per month. Raising \$7,265 from recurring donors in 2021 helped to have consistent funds.



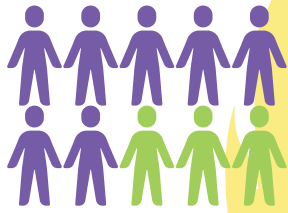
Text "Give" to 724-213-7854 to make a one time donation or become a monthly sponsor at any level. Every contribution makes a lasting impact.

Growing our connections.

Meeting the needs for Change and Growth

23%

Current Funding
Needs for the
2022 year!



We continue to seek
to market and make
more connections
and increase the
participants in our
groups.

**With the growth of Toto, we pursue funding for
these new and innovative programming areas:**

Inclusive Autism Program:

Minecraft Connections
Gaming Together

Empowering Moms Program:

Infertility and Secondary Support Groups
Additional New Moms Groups Locations
Birth Trauma Support Group

Community Based Workshops for a variety of
tough and needed topics

WE SEEK COMMUNITY SUPPORTERS

When community members
sponsor our program
monthly, we can ensure our
weekly support groups
continue.

SKIP A COFFEE!

\$5 A
MONTH
SPONSOR
ONE GROUP
FOR A
PARTICIPANT

PASS ON LUNCH OUT!

\$10 A
MONTH
TO SEND A
MONTHLY CARE
PACKAGE

\$15 A
MONTH
SUPPORT
ZOOM
MEMBERSHIP
FOR A MONTH

[HTTP://PARENTSINTOTO.
NETWORKFORGOOD.COM](http://parentsintoto.networkforgood.com)



\$25 A
MONTH
SPONSOR
GROUP
ATTENDEE FOR
A FULL MONTH

\$50 A
MONTH
HELP STOCK
THE CENTER'S
COFFEE &
SNACKS

EVERY
DONATION
MAKES
A BIG
IMPACT

INSTEAD OF DINNER OUT THIS MONTH...

ADDITIONAL WAYS TO HELP FINANCIALLY

- Organize a private fundraiser
- Pursue Company Matching programs
- Share fundraising or grant opportunities

Toto seeks support as we continue to fund our mission in these areas:

- Corporate matching opportunities
- Expand our Board of Directors and our community connections
- Increase monthly sponsorship commitments and repeat giving
- Work with local organizations to hold mission centered community fundraisers.
- Pursue business sponsorship for specific programs and groups.

Our 2021 Toto Team

Serving our Community Together

TOTO STAFF



Mary Limbacher
Founder
Executive Director



Krystin Smith
Program Support Coordinator



Megan Shane, MA
Outreach Manager
Empowering Moms Manager



Sydney Branby
Administrative Assistant

TOTO BOARD OF DIRECTORS

President • Donald Brezina Controller, Crews Control, Inc. & parent of son living with autism

Vice President • Cheryl Irwin Student, University of Pittsburgh Social Work Master's Program & mother of a daughter living with autism

Treasurer • John Limbacher Finance Manager, Printpack & parent of son living with autism

Secretary • Tammi Morton Project Coordinator, PEAL Center & parent of a daughter living with autism

Director/Development Committee Chair • Angelica Perry Corporate Communications Professional, DICK'S Sporting Goods

Director • Allison Broaddrick MT-BC Founder & Board-Certified Music Therapist, Three Rivers Music Therapy, LLC

Director • Valerie McMahon Individual Diagnosed ASD in 2011, Lives independently and has a big heart for Toto

